



**United Way
of Palm Beach County**

Palm Beach County Hunger Relief Plan

Mackenzie Scott Overview

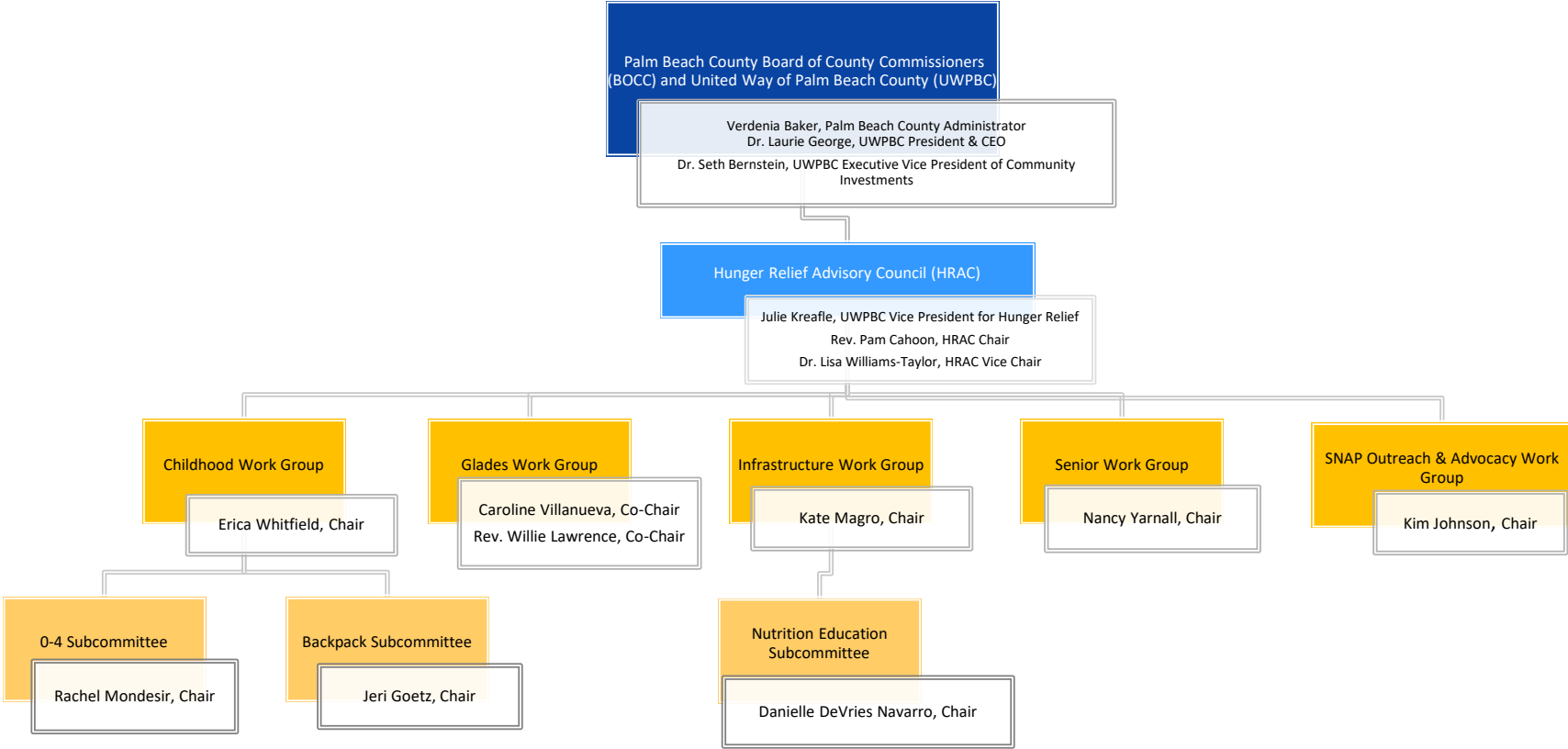
June 22, 2022

History

- Food Insecurity Community Problem - 2015
- Partnered with Food Research and Action Center, Washington D.C. & University of South Carolina Arnold School of Public Health
- Engaged 180 community organizations
- Conducted numerous personal interviews - key stakeholders, service recipients and providers
- Result: Hunger Relief Plan Palm Beach County



Hunger Relief Governance Structure



Community Needs

- 61+% (or more than 112,200) Palm Beach County School District students are eligible for free and/or reduced-price lunch.
- 2,207 seniors on the home-delivered meals waitlist as of May 13, 2022. Palm Beach County is projected to have close to 30% of residents 65 or older by 2040.*



**Bureau of Economic and Business Research, University of Florida, June 2021.*

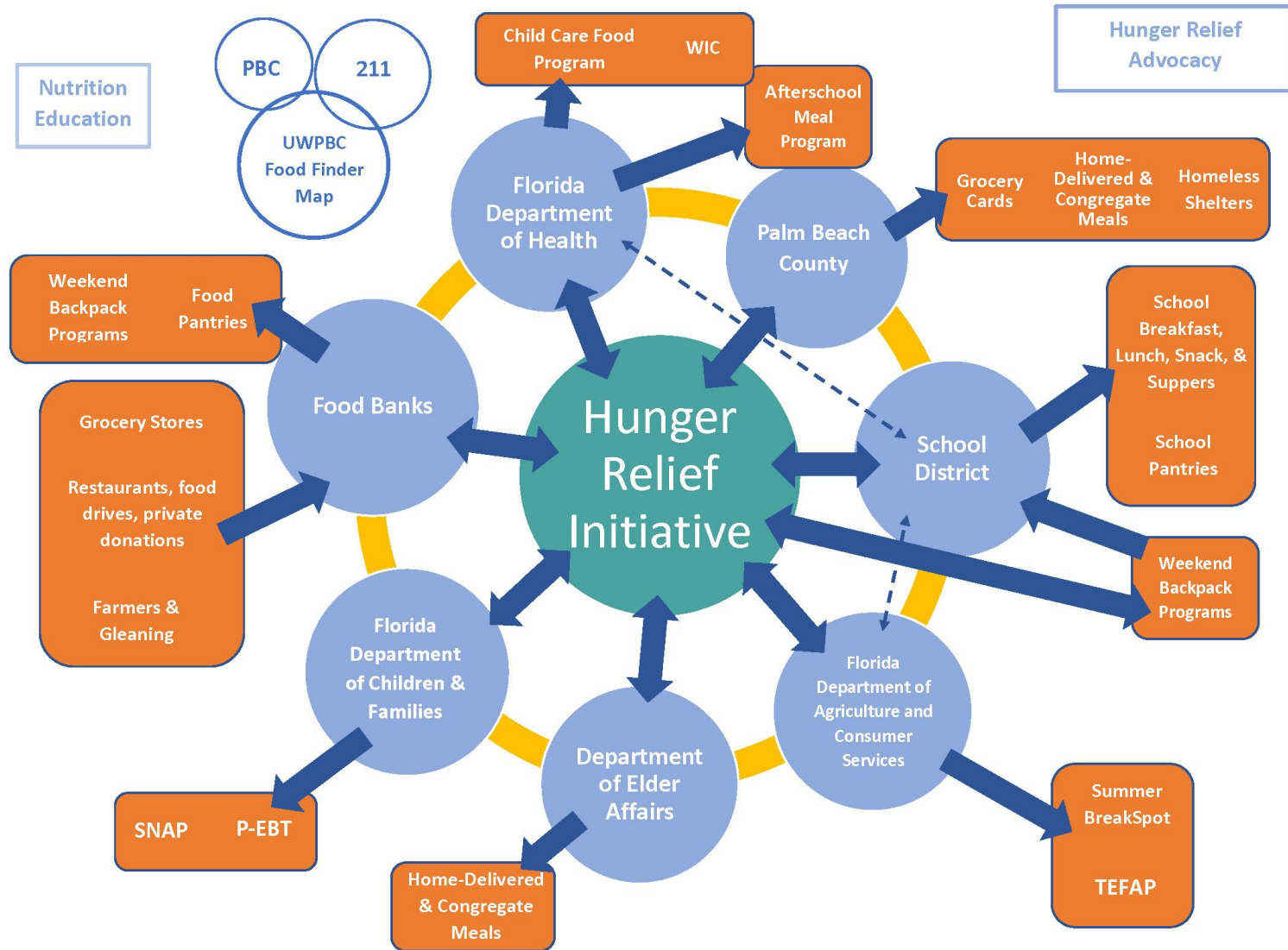
Community Needs

- More than 181,340 residents in Palm Beach County still struggle with hunger, a 9.24% reduction since last year. **
- 34% of Palm Beach County households are ALICE households.

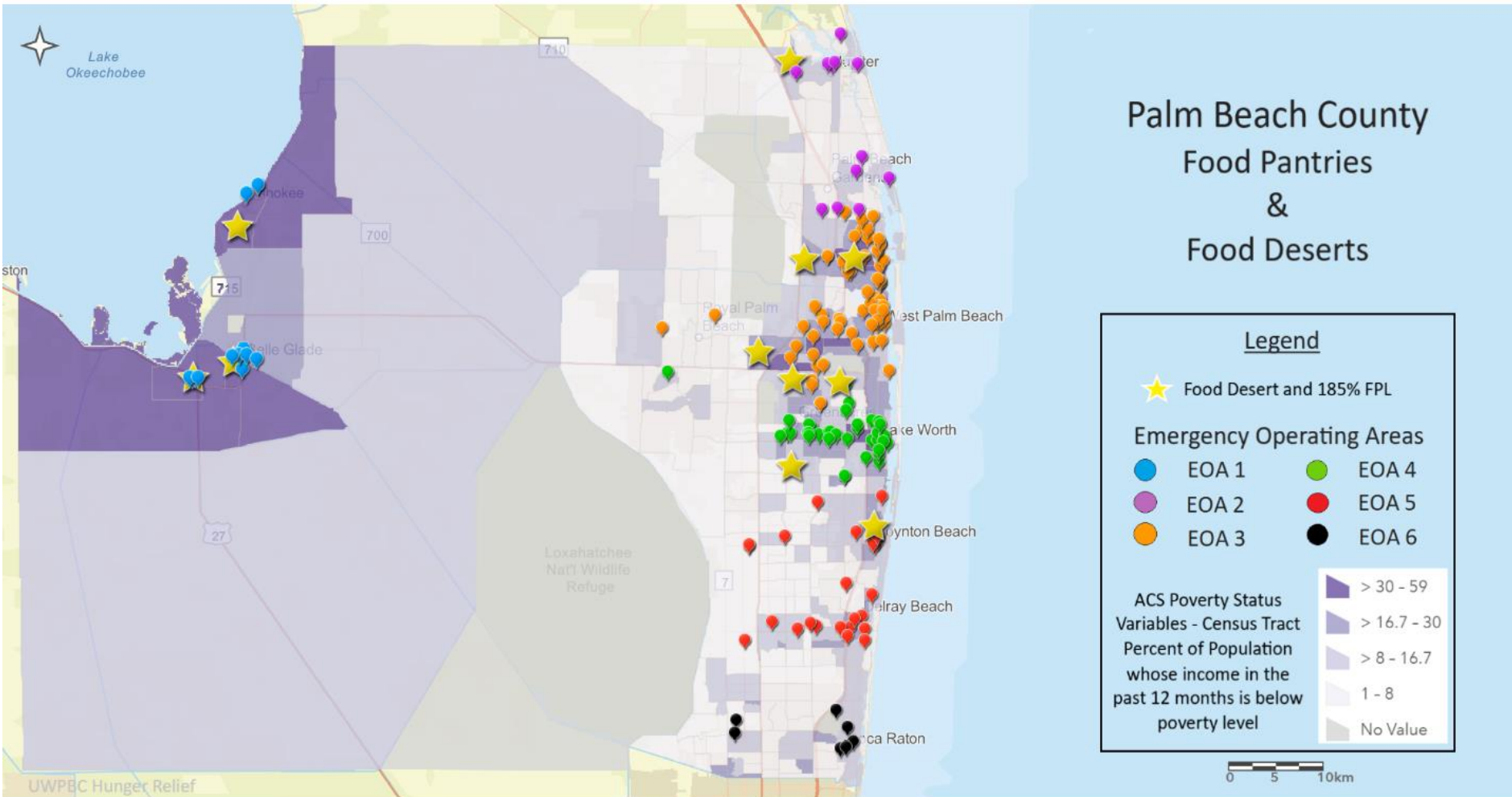


**Gundersen, C., M. Hake, A. Dewey, E. Engelhard (2021). *The Impact of the Coronavirus on Food Insecurity in 2020 & 2021, Update March 2021* [Data file and FAQ]. Available from Feeding America: research@feedingamerica.org.

Food System Distribution Flow



Food Pantries and Food Deserts



Low Income & Low Access Areas

Palm Beach County Low Income and Low Access to Food

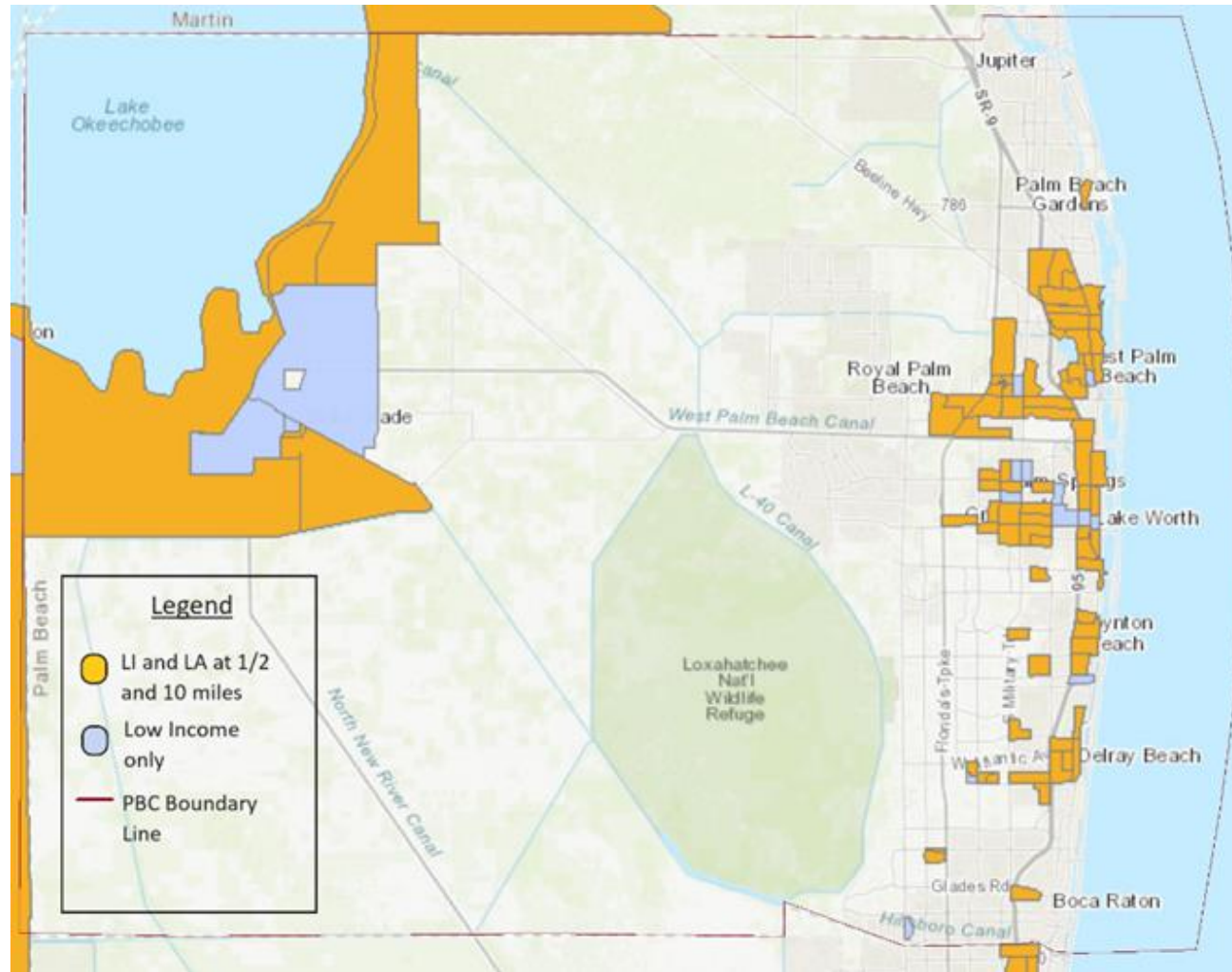
Component layers have been provided by the U.S. Department of Agriculture Economic Research Service *Food Access Research Atlas*. Census tracts are overlaid with Low Income and Low Income (LI) & Low Access (LA) layers. Low-income tracts are those with a poverty rate of 20% or higher, or tracts with a median family income less than 80% of median family income for the state or metropolitan area. LI and LA census tracts represent low-income census tracts where a significant number or share of residents is more than ½ mile (urban) or 10 miles (rural) from the nearest supermarket.

Source: USDA/ERS *Food Access Research Atlas*



Legend

- LI and LA at 1/2 and 10 miles
- Low Income only
- PBC Boundary Line



Policy Recommendations

- Request Food and Nutrition Services (FNS) waiver to ensure SNAP Recertifications and Interview Requirements due to staff shortages
- Expand Fresh Access Bucks at Retailers
- Returning Citizens SNAP Bill
- SNAP Benefits for Veterans and People with Disabilities
- Bolster SNAP Agenda at Federal Level

COVID-19 Contributions

- Served as umbrella organization and convener for hunger relief needs in Palm Beach County
- Created United Way of Palm Beach County Food Finder Map
 - <https://unitedwaypb.org/hunger/>
- Advised Palm Beach County Administration regarding distribution of CARES Funds for food
- Provided direction and expertise to COVID-19 Funders Group on community hunger relief needs and best use of funding
- Monitor food distribution through our networks, data and WebEOC
- Implemented Food for Kids Survey
- Partnered with community for online summer activities for Summer BreakSpot

COVID-19 Contributions

- Eliminated senior home delivered meals waitlist (approx. 1,000). Average number of meals provided weekly: 33,000.
- Created COVID-19 PSAs that were used at COVID test centers and food distribution sites
- Developed partnerships with Palm Beach County farmers
- Advocated at the state and national level for P-EBT, SNAP and Farmers to Families Food Boxes
- Worked with City officials around the County to identify high need areas for Grab 'n Go Meals distribution
- Started Weekly Hunger Relief Update that went to more than 400 community partners and is now sent monthly to community partners, elected officials, and residents
- Worked closely with Palm Beach County Food Bank to monitor pantry openings and closings as well as PPE needs

2021 - 2022 Highlights of Accomplishments

- Food pantry food storage increased by 4,380 cubic feet
- Engaging 53 food pantries to work on capacity building plan
- Funded Palm Beach County Food Bank (PBCFB) Benefits (SNAP) Outreach Coordinator
 - PBCFB Benefits (SNAP) Outreach*
 - More than 3,300 applications completed (impacting 7,600+ people)
 - More \$6.5 million in SNAP
 - More than \$11.7 million in economic impact
- Participated/led 12 Hunger Relief advocacy efforts to date
 - National
 - State

*PBCBF FY 2020-2021 (July – June)

2021 – 2022 Highlights of Accomplishments

- Home delivered meals provided to 951,449 seniors for a 12.4% increase
 - Provided \$102,000 in funds for AAA toward federal match
 - Engaged local funders to contribute
- Healthy Corner Store in Canal Point highlighted by Robert Wood Johnson *Culture of Health Prize*
 - Spearheaded by Palm Health Foundation with Children’s Services Council and PBC Youth Services Department

2021 - 2022 Highlights of Accomplishments

- Women, Infants and Children (WIC) Outreach Campaign in partnership with Florida Department of Health
 - Developed and distributed video and outreach materials
- Developing Enhanced Family Weekend Backpack Program – Northmore Elementary School, West Palm Beach, to launch in Fall 2022
- Developed MacKenzie Scott Five-Year Plan

Mackenzie Scott Strategic Plan Timeline



A Vision for the Future

STRATEGIES	TACTICS	OUTCOMES
<p>Facilitate cross-system and inter-system collaboration</p> <p>Expand hunger relief system capacity</p> <p>Expand hunger relief pantries' capacity</p>	<p>Expand Hunger Relief Council</p> <p>Promote cross-system and intra-system referrals</p> <p>Integrate County, 211 and Food Finder</p> <p>Create Geo-Thermal Greenhouse</p> <p>Enhance food bank storage and commercial kitchen capacity</p> <p>Enhance pantries' capacity</p> <p>Enhance pantries' IT infrastructure</p> <p>Establish food distribution hubs</p>	<p>Increase the availability of healthy food</p> <p>Increase access to healthy food</p> <p>Increase the amount of food distributed</p> <p>Reduce the number of food insecure PBC residents</p>

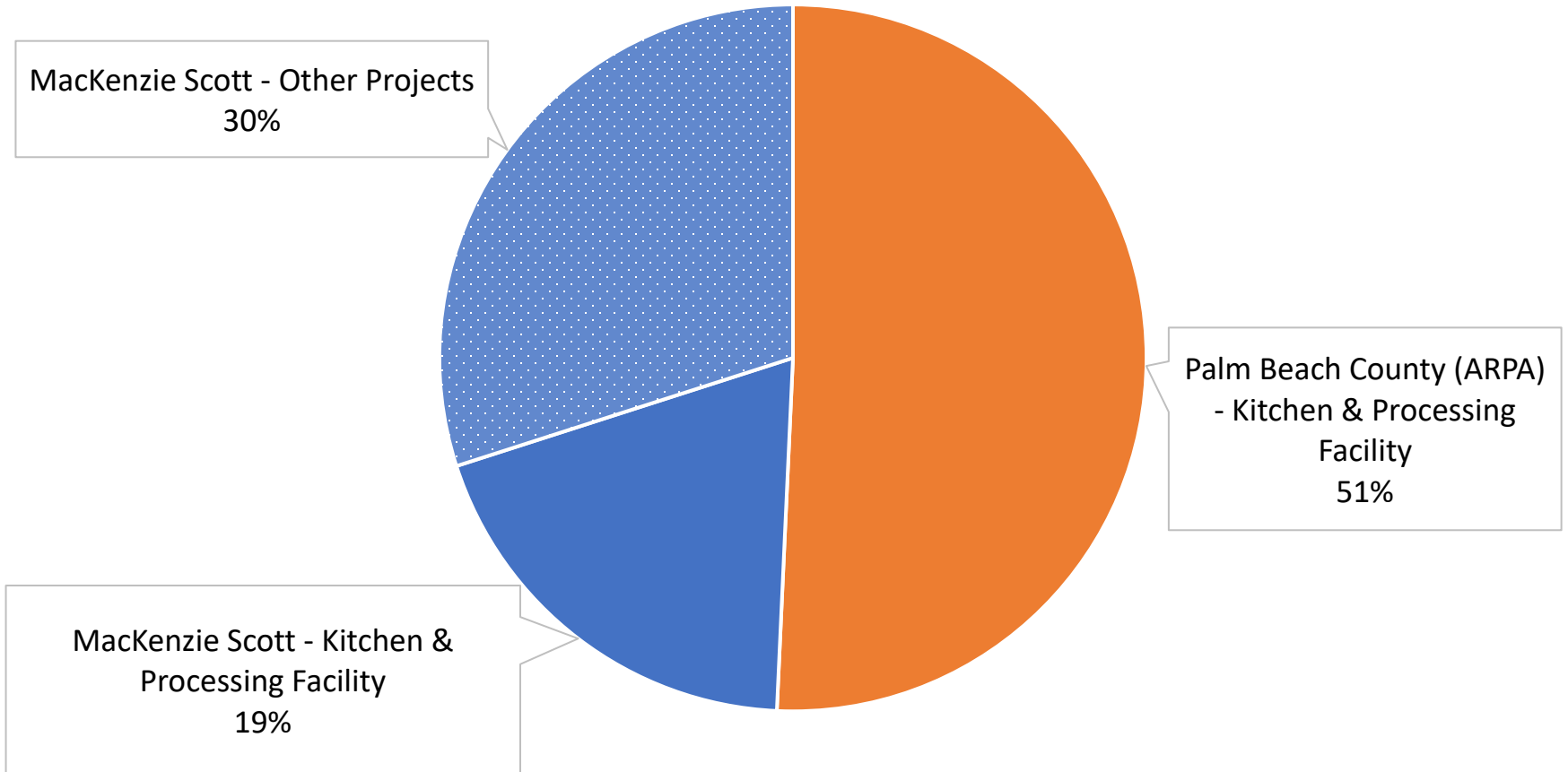
- Facilitate creation of a stronger, more comprehensive and coordinated system of supports for the food insecure
- Significantly increase the volume of nutritious food available and distribute food
- Connect food insecure residents to the array of services available to promote their long-term self-sufficiency

Mackenzie Scott Hunger Relief Strategic Plan Timeline



MacKenzie Scott Project Funding

Hunger Relief Projects by Funding Source



Palm Beach County Food Bank Partnership

Increase Food Bank Capacity, and Build Out Commercial Kitchen & Food Processing Facility



Moving Forward

The goal is to alleviate hunger in the short-term while also promoting the residents' self-sufficiency in the long-term.





Hunger Relief Palm Beach County

UnitedWayPBC.org/Hunger

United Way of Palm Beach County

United
Way

